



COMUNICACIONES

SECRETARÍA DE COMUNICACIONES Y TRANSPORTES

ADMINISTRACIÓN PORTUARIA INTEGRAL DE VERACRUZ, S.A. DE C.V.



VERACRUZ

COORDINACIÓN GENERAL
DE PUERTOS Y MARINA MERCANTE

ADMINISTRACIÓN PORTUARIA INTEGRAL DE VERACRUZ, S.A. DE C.V.

Concession Title granted: February 1st, 1994



- **Federal Government grant to administer the port area for 50 years, extension that has been generated until 2094.**
- **Administrative, operational and financial Autonomy**
- **Subjected to a Master Development Program**
- **Assigns Partial Rights Contracts Cessions with private companies for maneuvering.**
- **Earnings are invested in port infrastructure**
- **Sinergy and Competition with other ports**
- **Certificates: ISPS code, ISO Standards 9001-2015, 14001-2015, Clean Industry, OHSAS 18001-2007, ISO 28000-2007 (Chain Supply security).**

ESTRATEGIES

Organization of the National Port System

COMUNICACIONES

SECRETARÍA DE COMUNICACIONES Y TRANSPORTES

PUERTOS
Y MARINA
MERCANTE

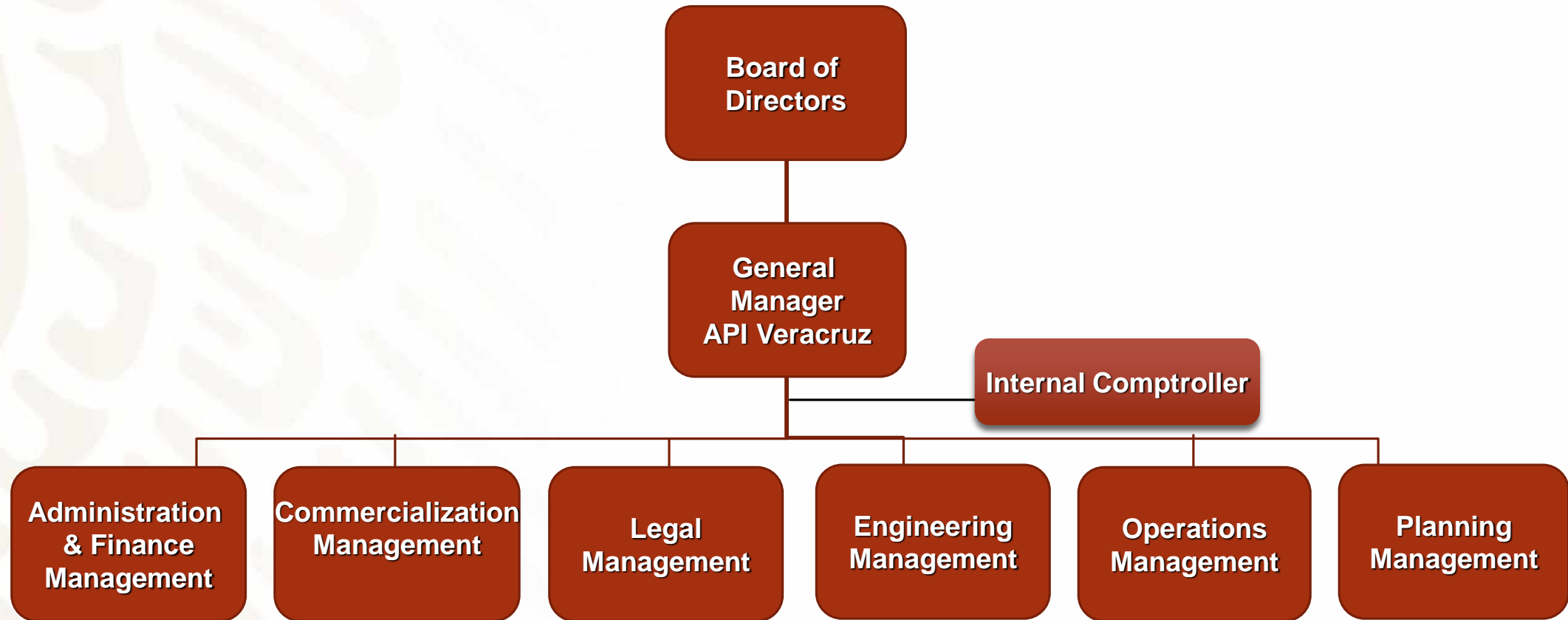
COORDINACIÓN GENERAL



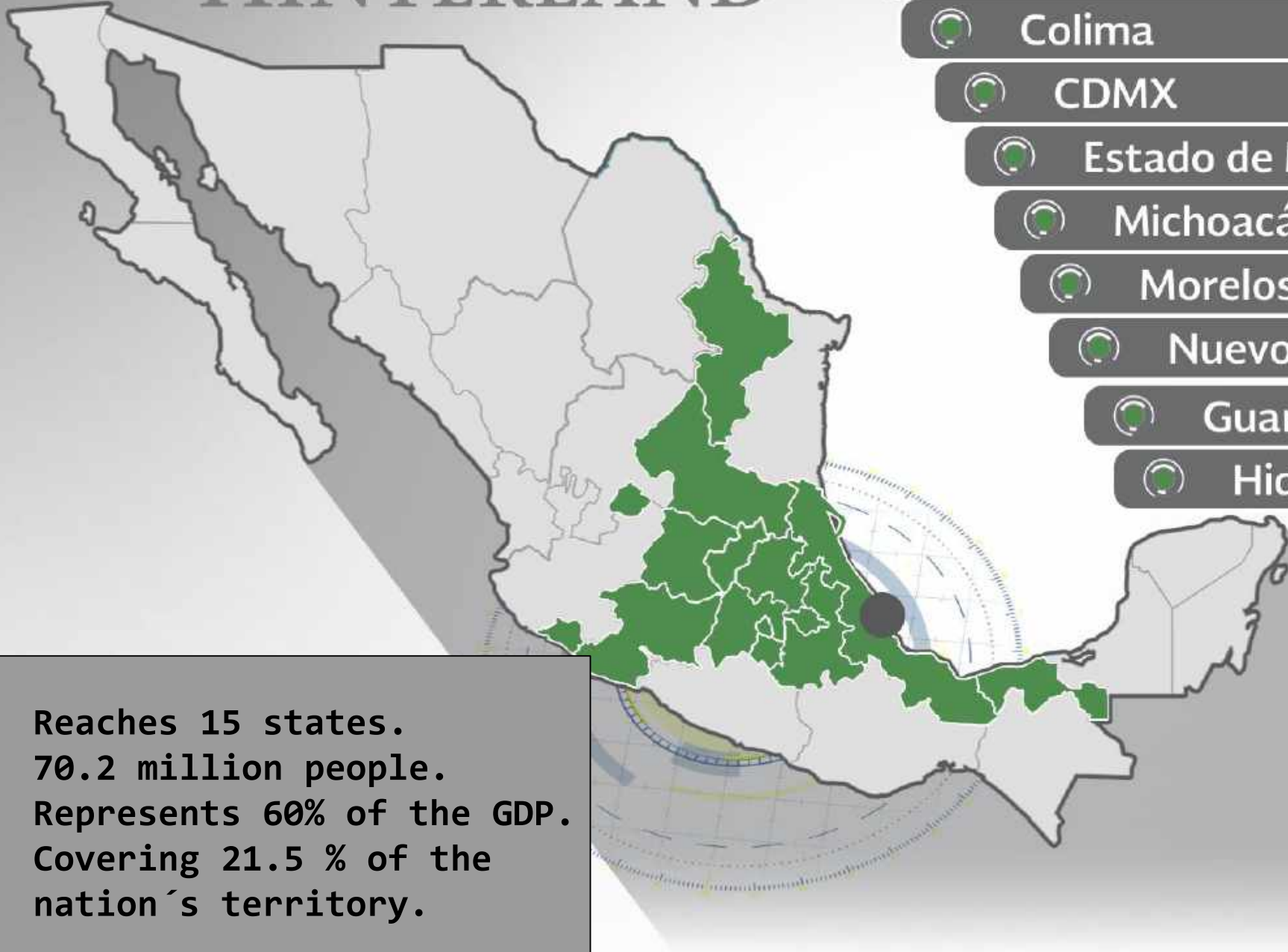
SIPCOS

Promoters of
socio-economic,
coastal and
regional
development

API VERACRUZ ORGANIZATION CHART



HINTERLAND



Aguascalientes



Colima



CDMX



Estado de México



Michoacán



Morelos



Nuevo León



Guanajuato



Hidalgo



Puebla



Querétaro



S.L.P.



Tabasco



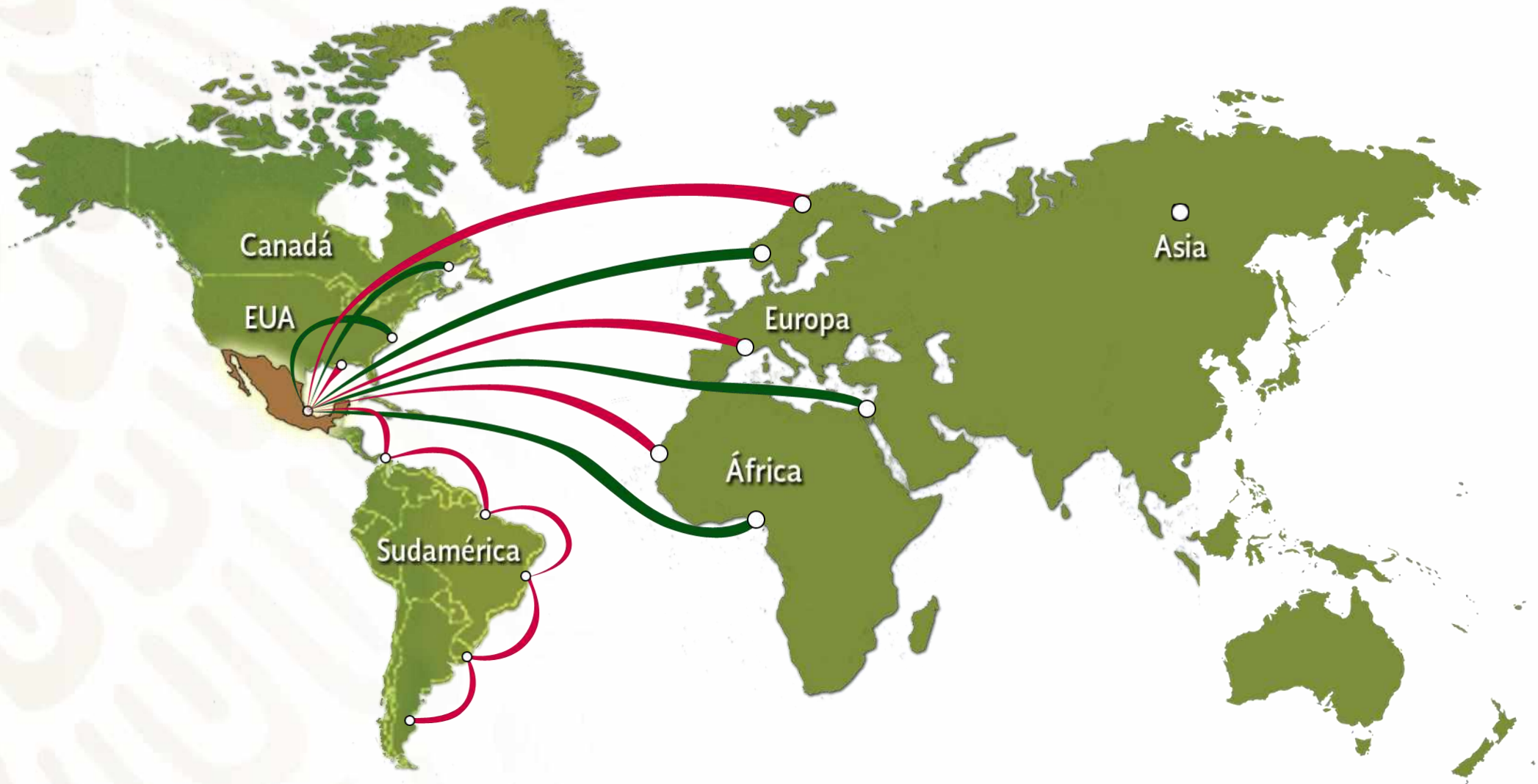
Tlaxcala



Veracruz

- Reaches 15 states.
- 70.2 million people.
- Represents 60% of the GDP.
- Covering 21.5 % of the nation's territory.

(FORELAND)



HIGHWAY CONNECTIONS

Highway	km
Veracruz - Puebla	281
Veracruz - D.F.	405
Veracruz - Querétaro	605
Veracruz - Silao	742
Veracruz - Aguascalientes	899



RAILWAY CONNECTIONS

City	Railway (Km)	Time (Hrs)
Puebla, Puebla	312.3	13
Tlaxcala, Tlaxcala	312.3	12
México, D.F.	441.8	20
Pachuca, Hidalgo	427.4	36-48
Querétaro, Qro.	664.1	60
Monterrey, N.L.	1372.1	104
Guanajuato, Gto.	815.3	80
San Luis Potosí, SLP	856.1	84
Morelia, Michoacán	883.8	72

■ Ferromex
■ Ferrosur
■ Kansas City Southern





DOUBLE STACK



THREE LEVEL

HAVING MORE THAN 27 SHIPPING LINES AND 54 MARITIME ROUTES



Containers



Vehicles

Break Bulk



Mineral Bulk



Agro Bulk

Liquid Bulk



POSITIONING THE MAIN LOADS OF API VERACRUZ AT THE NATIONAL LEVEL:



Place
1°

%
65

2017
VEHICLES



1°

50

AGRO BULK

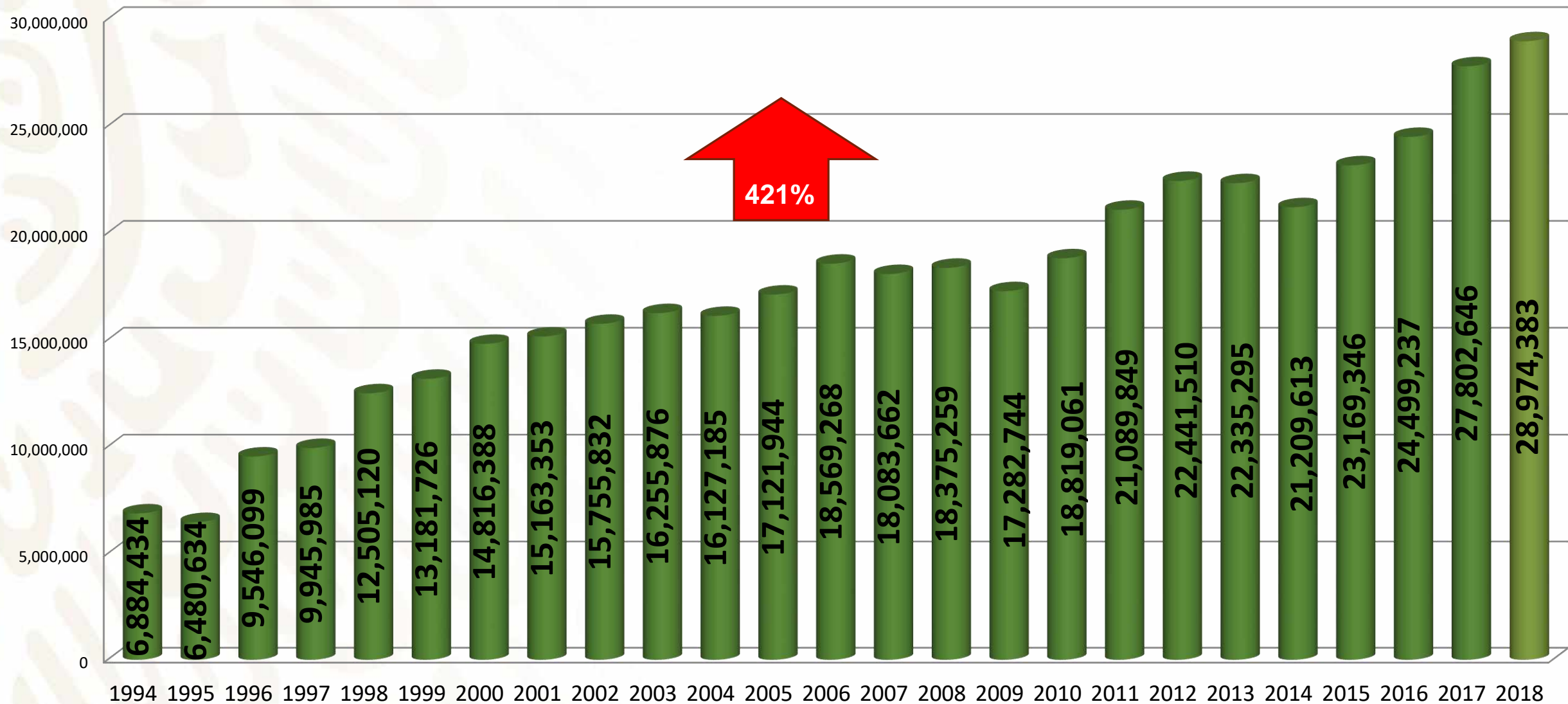


1°

55

**CONTAINERS IN
THE GULF**

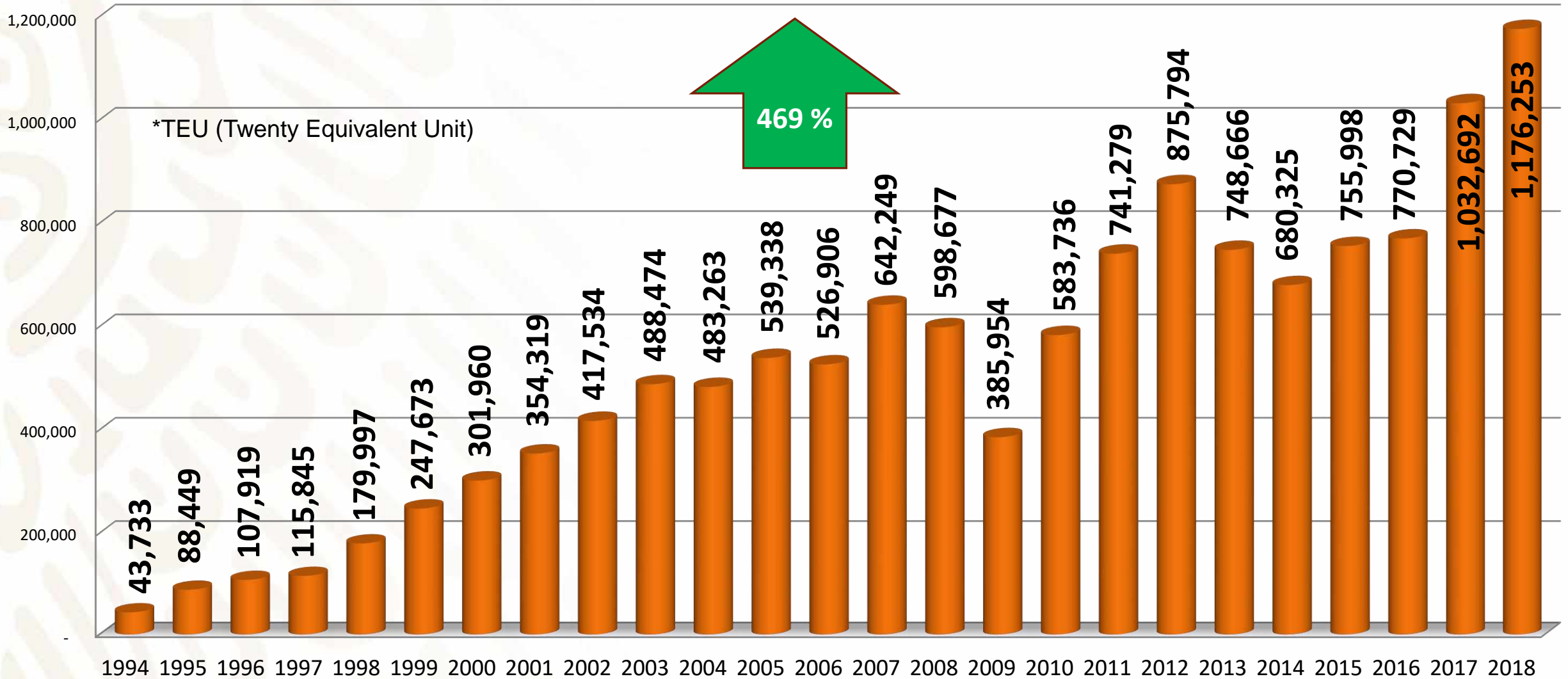
Historical Series of the Movement of Load 1994-2018 (million tons)



Historical Series of the Teu's Movement *

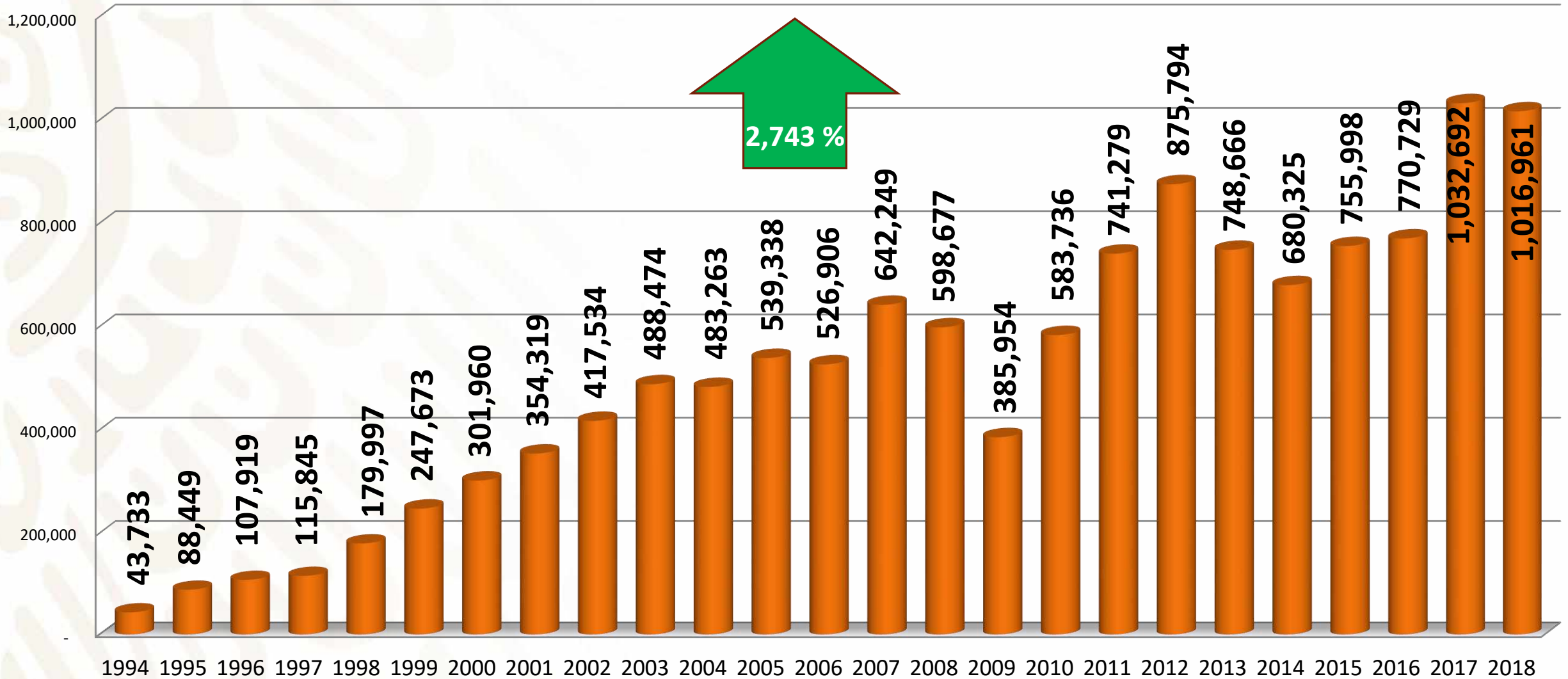
1994-2018

*TEU (Twenty Equivalent Unit)

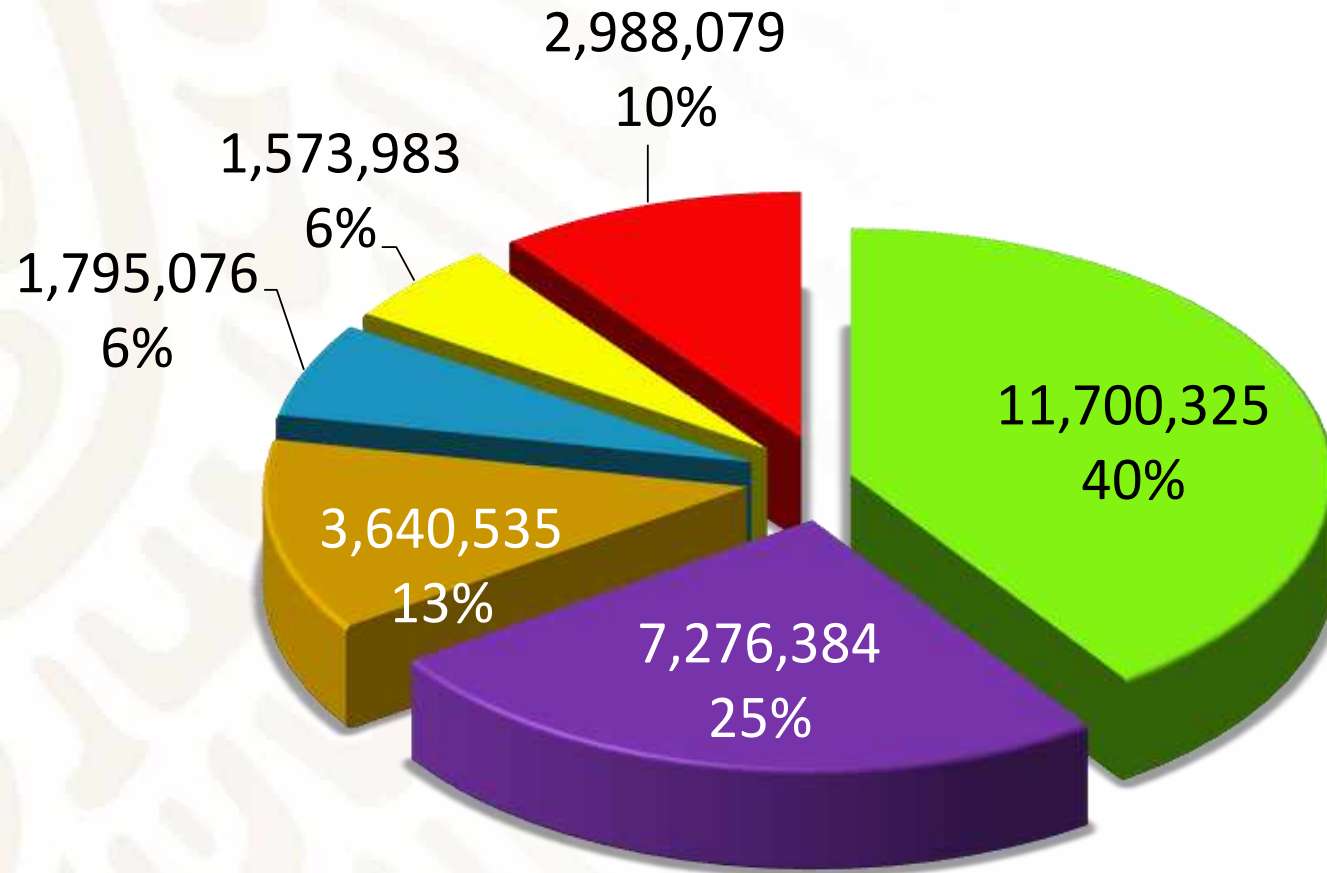


Historical Series of Vehicle Movement

1994-2018



COMMERCIAL CARGO VOLUME 2018



■ Contenerized 1,176,253 Teu's.

■ Agro Bulk

■ Mineral

■ Break Bulk

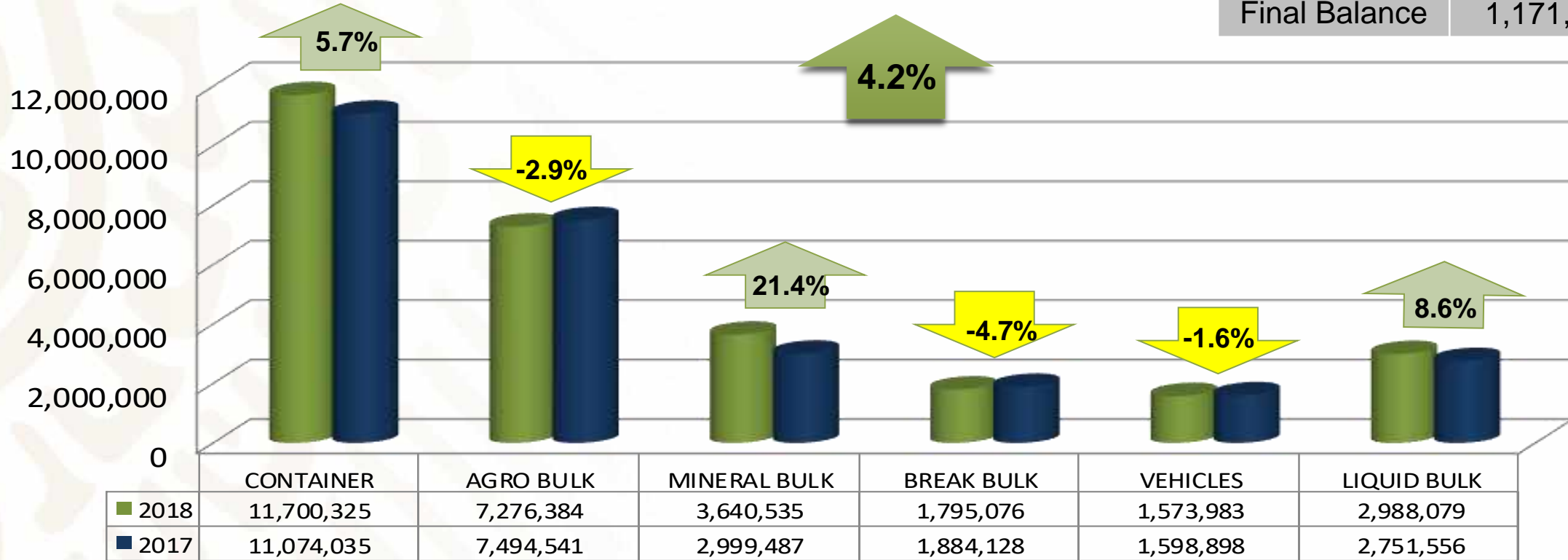
■ Vehicles 1,016,961 Units

■ Liquid Bulk

Total 2018: 28'974,383 Tons

COMMERCIAL CARGO MOVEMENT JANUARY – DECEMBER 2017 - 2018

Total Tones	
2018	28,974,383
2017	27,802,646
Final Balance	1,171,737



	Teu's
2018	1,176,253
2017	1,117,304

5.3%

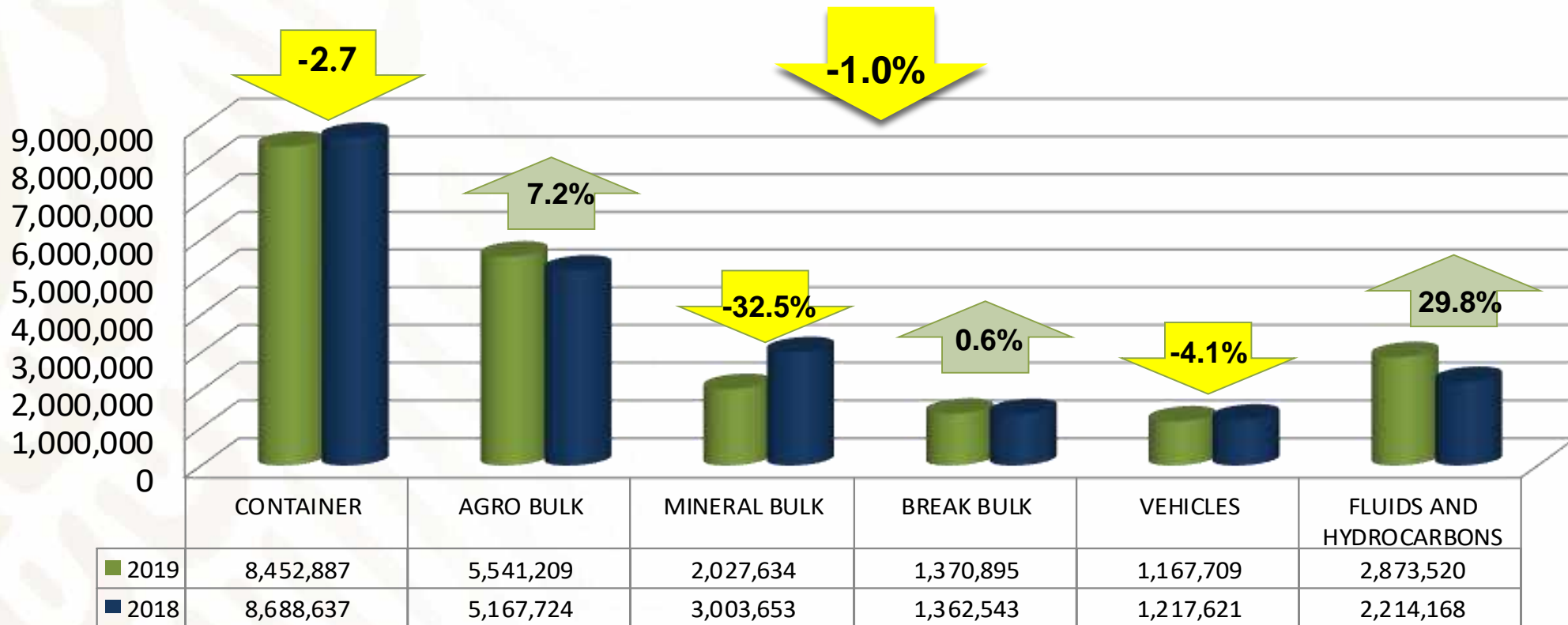
	Vehicles (Units)
2018	1,016,961
2017	1,032,692

-1.5%

COMMERCIAL CARGO MOVEMENT

SEPTEMBER 2018 - 2019

Total Tones	
2019	21,433,854
2018	21,654,345
Final Balance	220,491



	Teu's
2019	861,064
2018	866,964

0.7%

	Vehicles (Units)
2019	755,266
2018	791,746

-4.6%

CURRENT PORT DIAGRAM



18 Docking Positions.

Storage Surface:

API	600,000 m ²
-----	------------------------

Port Companies	1,275,435.33 m ²
----------------	-----------------------------

Depth	m	Ft
Muelles	8 - 13	26 – 43
Dársena	16	52

MAIN FACILITIES IN THE PORT

Type of Cargo	Port Companies	Name
General Cargo	4	RICSA GOLMEX CIF SEMAVE
Bulk Cargo	4	CARGIL TMV TCE GRAMOSA
Automoviles	2	CPV SSA
Containers	3	ICAVE CICE PINFRA
Mineral Cargo	3	APASCO SEPSA OPEVER
Fluids	3	VOPAK Excellen Sea & Land Logisitcs IENOVA
Astillero	1	TNG
Oil	1	PEMEX



SECURITY

SECURITY AND ACCESS TO THE PORT

Daily goes into the port:

20,800 people

4,200 units



✓ 317 private security elements for Port Protection.

24 hours Close Circuit TV operation, with more than 275 FHD cameras, turnstiles, metal detectors, X ray, surveillance patrols, Speedboat patrol.

SECURITY AND ACCESS TO THE PORT

PORT PROTECTION- RESCUE & FIRE EXTINCTION CENTER

Equipment & personal:

- 🚒 6 specialized units for emergencies.
- 🚒 16 Fireman and 2 Paramedics.



- 🚒 Annual drills with the Port Community
- 🚒 Training in the use and handling of fire extinguishers

SECURITY AND ACCESS TO THE PORT

CARGO ENTRY & EXIT

Daily operations by railway:

- 🚚 450 railway cars for Imported cargo.
- 🚚 150 railway cars for Export cargo.



Only Port with X ray equipment to scan containers loaded on the railway and 9 ICIS (Integrated Container Inspection System) gamma rays to scan the 100 % of the cargo that comes through the port.



Some Actions to Streamline the Port operations

QUALITY BRAND AT THE POR OF VERACRUZ



WHAT IS “QUALITY BRAND”?

It is a methodology implemented by the Port Administration since 2010 and its objective is:

- Detect process inefficiencies in the cargo handling, during its time in the port
- To decrease time and cost
- Encourage a better use of the informatics technologies (paperless Port)
- Increase the Port Competitiveness

WHO IS INVOLVED?

- | | |
|------------------|----------------------|
| ✓ Authorities | ✓ Services Suppliers |
| ✓ Port Companies | ✓ Railway Companies |
| ✓ Shipping Lines | ✓ Trucking Companies |
| ✓ Customs Agents | |

It was first implemented on CONTAINERIZED CARGO
And in 2014 it was implemented on VEHICLES

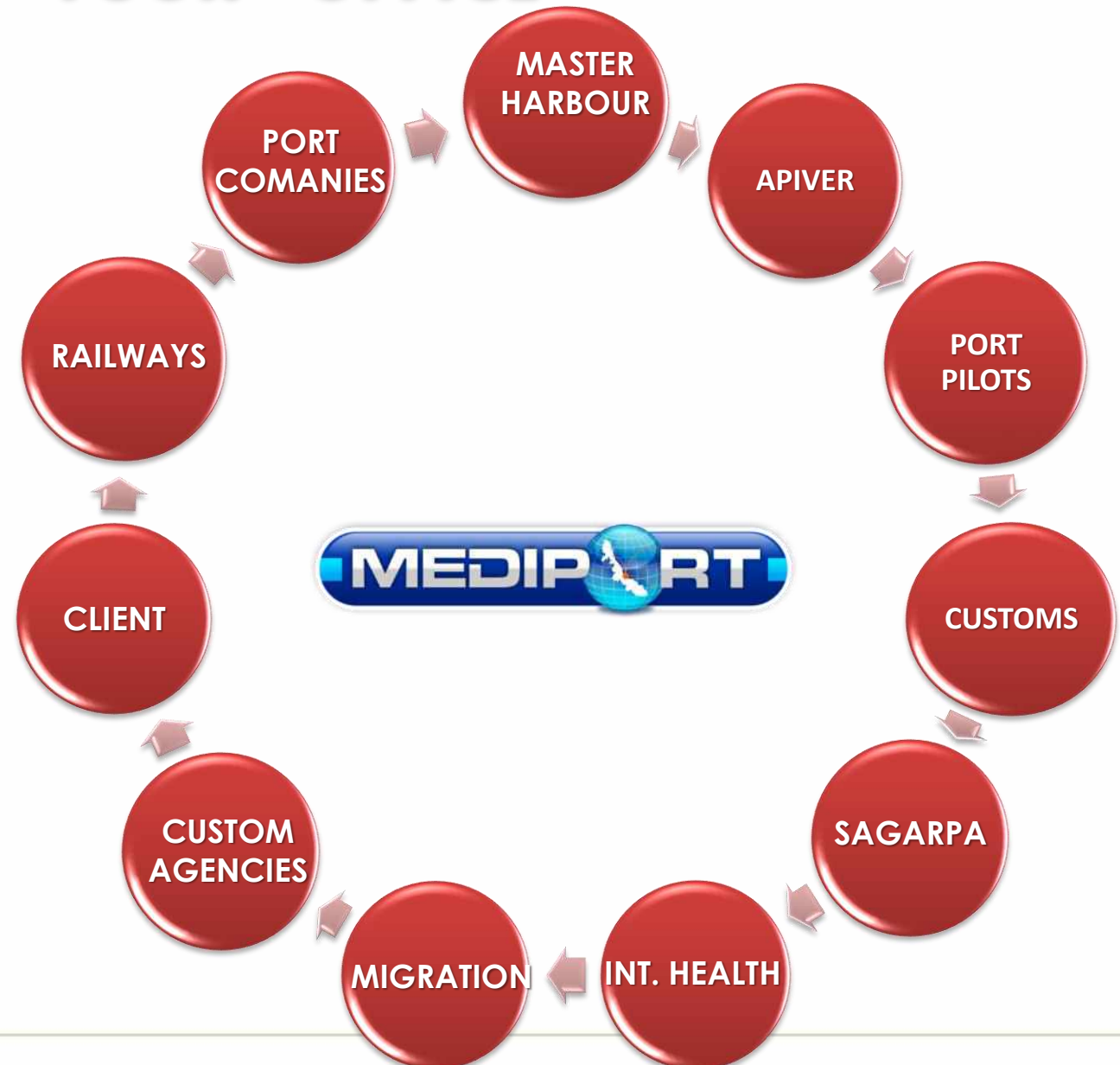




Paperless Port Plataform

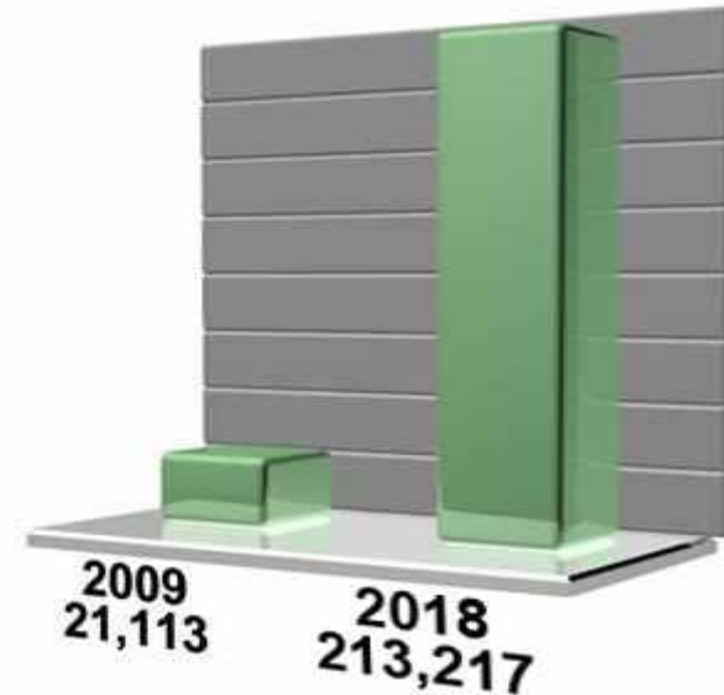
PORT SINGLE WINDOW – MEDI-PORT THE PORT IN YOUR OFFICE

Veracruz has a software developed by this entity called MEDI-PORT, serve as the Port Single Window and allows the integration of the logistic chain players, achieving to simplify, accelerate and provide certainty to the Port procedures.



PAPERLESS PORT PLATAFORM ELECTRONIC PAPERWORK ANNUAL SUMMARY

- ✓ **Vessel Services**
- ✓ **Cargo Services**
- ✓ **Port Services**
- ✓ **Access Control**
- ✓ **Customs**
- ✓ **Master Harbor**
- ✓ **Int. Health**
- ✓ **Sagarpa**



Important savings on paper consumption, time, cost and environmental pollution.



Environment



✓3 Environmental Management Units (UMA) with a surface of 71 hectares.

✓Reforestation Campaigns in schools, parks and gardens.

✓Mangrove Controlled Reproduction along with trees and other plants in APIVER's nursery home. In the last 8 years there has been more than a million seeded, reproduced and donated trees.



Port of Veracruz Modernization



Port Boulevard



Transport Logistic Attention Center (CALT)



Logistic Activities Zone (ZAL)



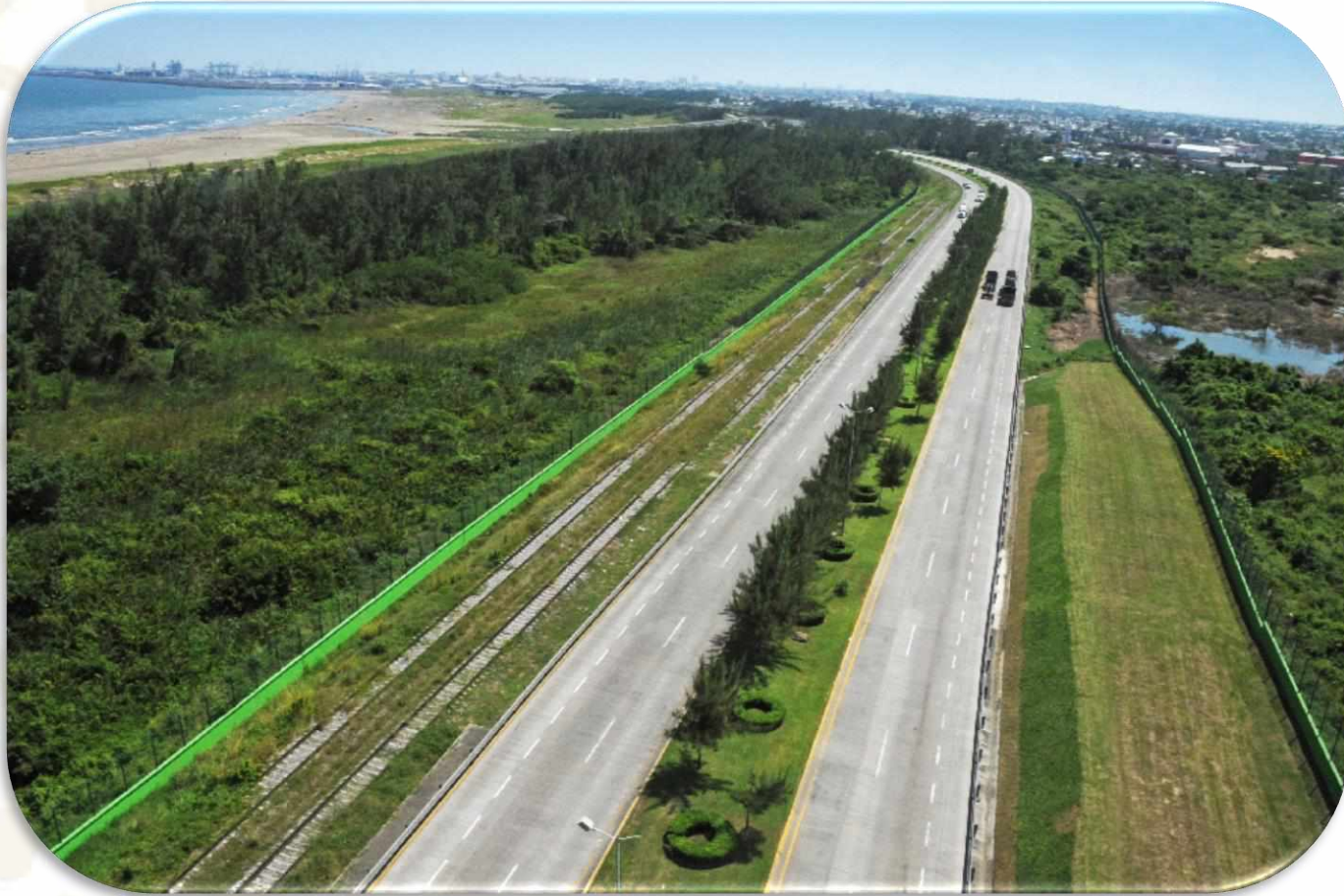
Railway Bypass to Santa Fe



**Port of Veracruz
Modernization**

Port of Veracruz Modernization





PORT BOULEVARD

PORT BOULEVARD

Bounded and exclusive road access for all the trucks that enters or leaves the Port, it has 7.5 km from the port to the Cardel-Xalapa highway.





Transport Logistic Attention Center (CALT)

TRANSPORT LOGISTIC ATTENTION CENTER (CALT)

- ✓ **Current Capacity: 650 trucks**
- ✓ **Second stage: 1,000 trucks**
- ✓ **Service Areas (bathrooms, dinners and showers.**
- ✓ **Avoids constant and unnecessary movement of trucks, reducing the pollutant emissions and traffic jams.**



SECURITY AND ACCESS TO THE PORT

Database with more than:

■ 60,400 drivers

■ 50,000 trucks



Trucking daily entrance average:

■ From 2,400 to 3,000 SPF units (depending the day)

